

How to install the Handgas lever for all Years and Types

What you need:

1x Handgaslever set



Tools

10mm Hexnut Wrench

13mm Hexnut Wrench



Mark the position of the shift rod

This will be the easy way to meet the right position in the reassembling phase



Loosen the screw and pull out the shift rod

Now remove the 3 screws from the shifter and pull out the shifter


Remove the black knob from the lever arm

Slide the lever arm through the front slot on the shifter bracket



Install the bracket for the push rod



 Be sure that's the bracket is in place like the picture shows

After removing the front cap of the push rod place the shifter and the lever arm back in place.

Be sure that the bracket in is the right position the bore of the shifter bracket must meet the bore of the bracket and the small pin in the lever arm bracket must fit the small bore in the shifter bracket.

At this point you must also thread the push rod front end in the bore of the installed bracket.



Reassembling your shifter with the shift rod

Push the end cap over the front end of the push rod.



⚠ Be sure that you have tighten all screws ⚠

How to install the pedal cluster enhancement

Tools

13mm Hexnut wrench

Welder

or

8mm Hexnut wrench

Philips Screw driver

5mm drill

1. Disconnect all cables and gas pedal push rod
2. Remove the pedal cluster



Now it is a good moment to check the pedal bushings

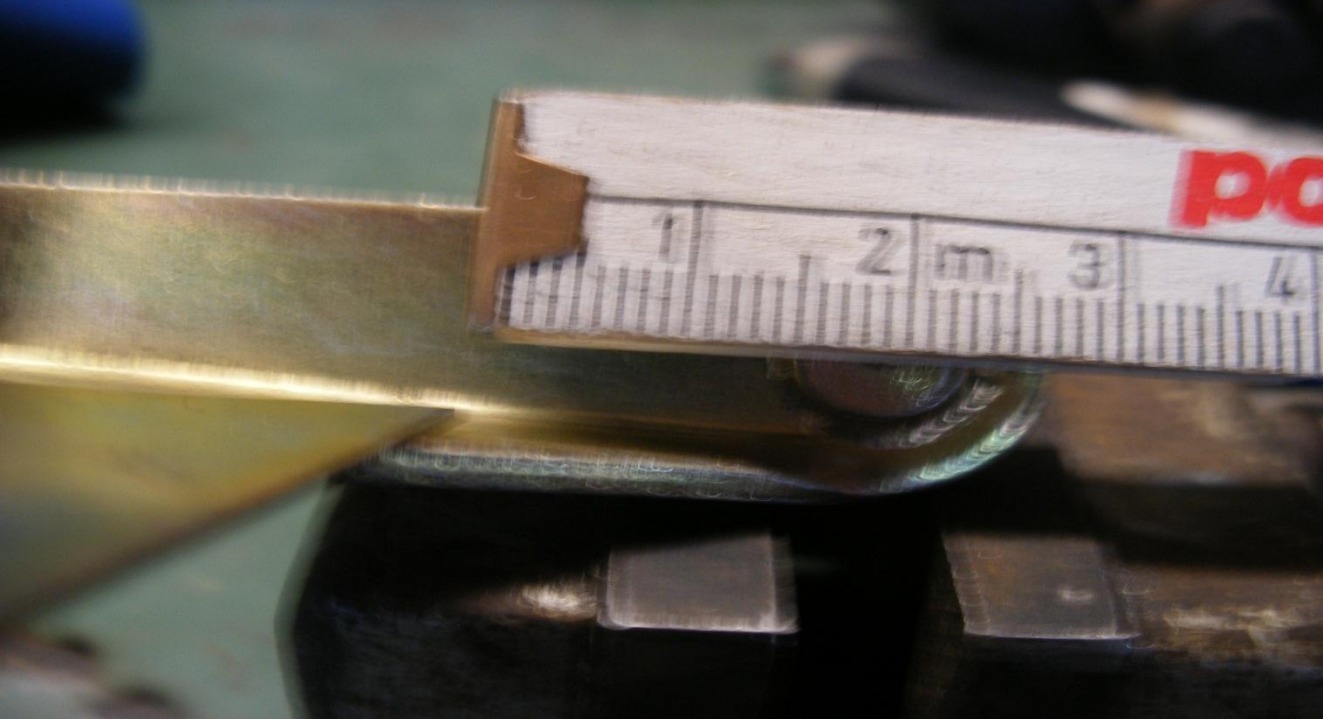
3. Remove the accelerator arm



4. Measure like the pictures show and mark the position
7mm



18-20mm from the middle of the rod



5. Weld it from both sides (but no so crappy ;-) please)

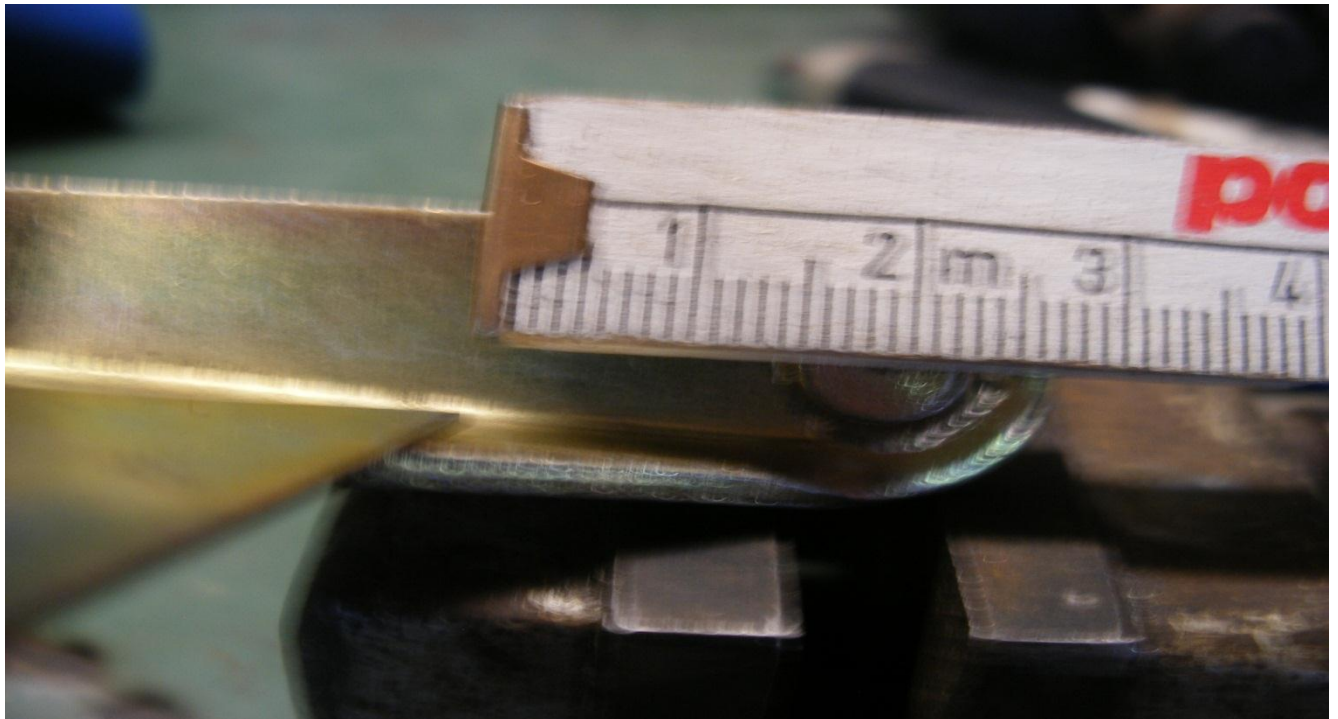


6. Reassemble the pedal cluster
7. Put the cluster back in place and connect all cables
8. If you make it all right it should look like this



Alternative you can bolt it on

Mark the position on the accelerator arm 20mm from the middle of rod. In the opposite of weld on version don't need the 7mm distance

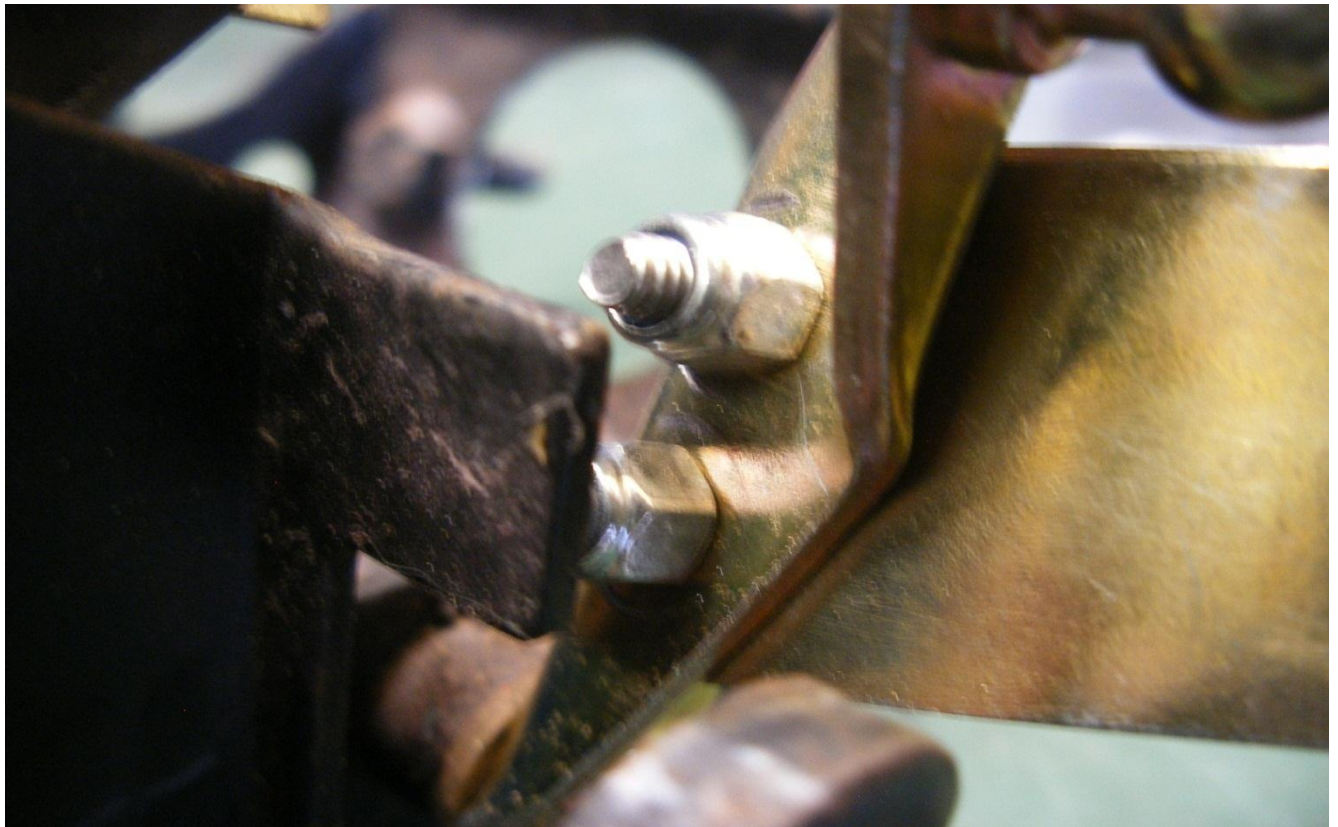


Mark two points on the enhancement and drill these with the 5mm drill
Transfer the holes between the markers on the accelerator arm and drill it also with the 5mm drill. After this lowering the bores like the pictures show

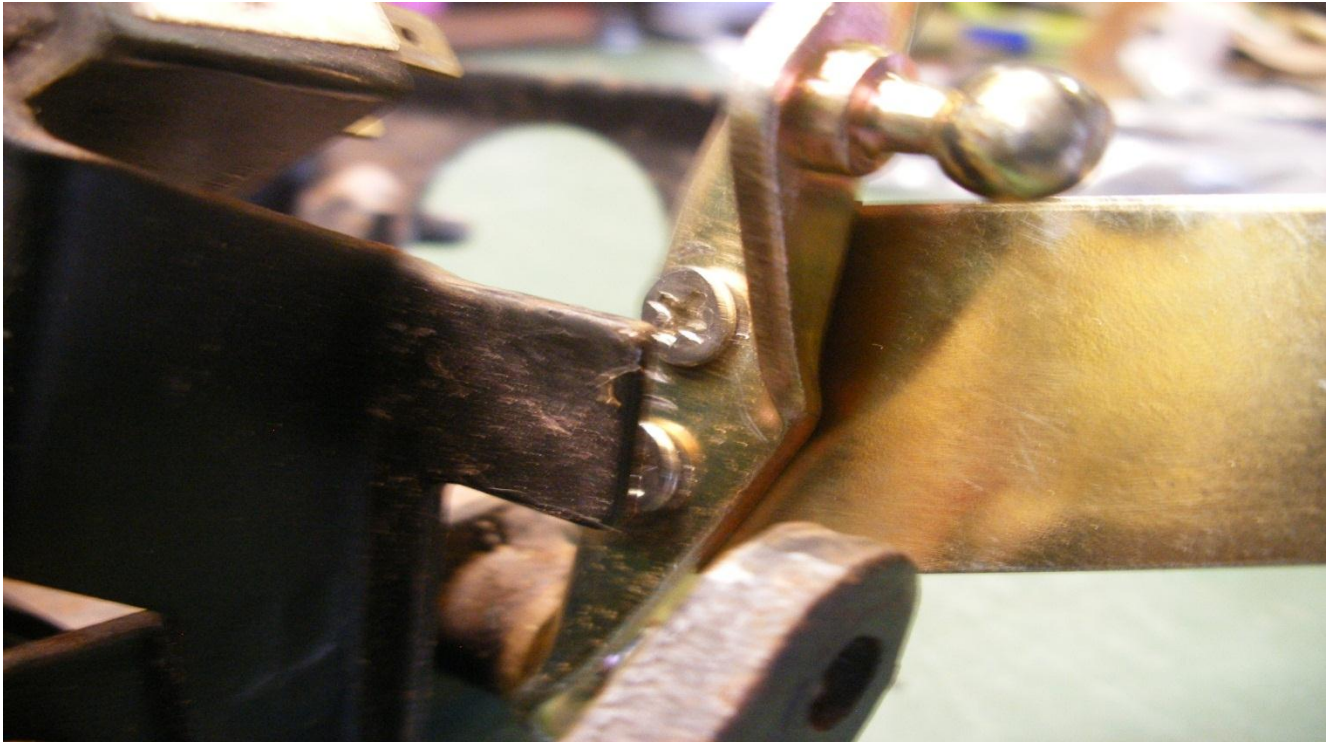




Wrong (!!)



Right



If you makes all correct it should looks like this.

